

Copyright Reserved

The Contractor shall verify and be responsible for all dimensions.
DO NOT scale the drawing - any errors or omissions shall be
reported to Stantec without delay.
The Copyrights to all designs and drawings are the property of
Stantec. Reproduction or use for any purpose other than that
authorized by Stantec is forbidden.

Consultants

Legend

1	ISSUED FOR ADDENDUM #2	CB	AA	25.07.17
Revision		By	Appd.	YY.MM.DD

ISSUED FOR CONSTRUCTION	CB	AA	25.06.04
Issued	By	Appd.	YY.MM.DD

File Name:		Dwn.	Chkd.	Dsgn.	YY.MM.DD
------------	--	------	-------	-------	----------

Permit-Seal

ORIGINAL
DRAWING
SEALED BY
A. AROUTIOUNOV
MEMBER
31095
Stantec Consulting Ltd.
2025-06-04



Certificate of Authorization
Stantec Consulting Ltd.
No. 1301

Client/Project

WINNIPEG TRANSIT MAINTENANCE FACILITY
OFFICE REDEVELOPMENT

421 OSBORNE ST. SOUTH, WINNIPEG, MB

Title

PARTIAL FLOOR PLAN - LIGHTING -
NEW CONSTRUCTION

Project No.	Scale
115421006	1/8"=1'-0"

Drawing No.	Sheet	Revision
-------------	-------	----------

E-201

7 of 18

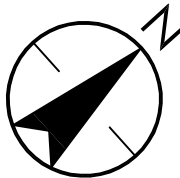
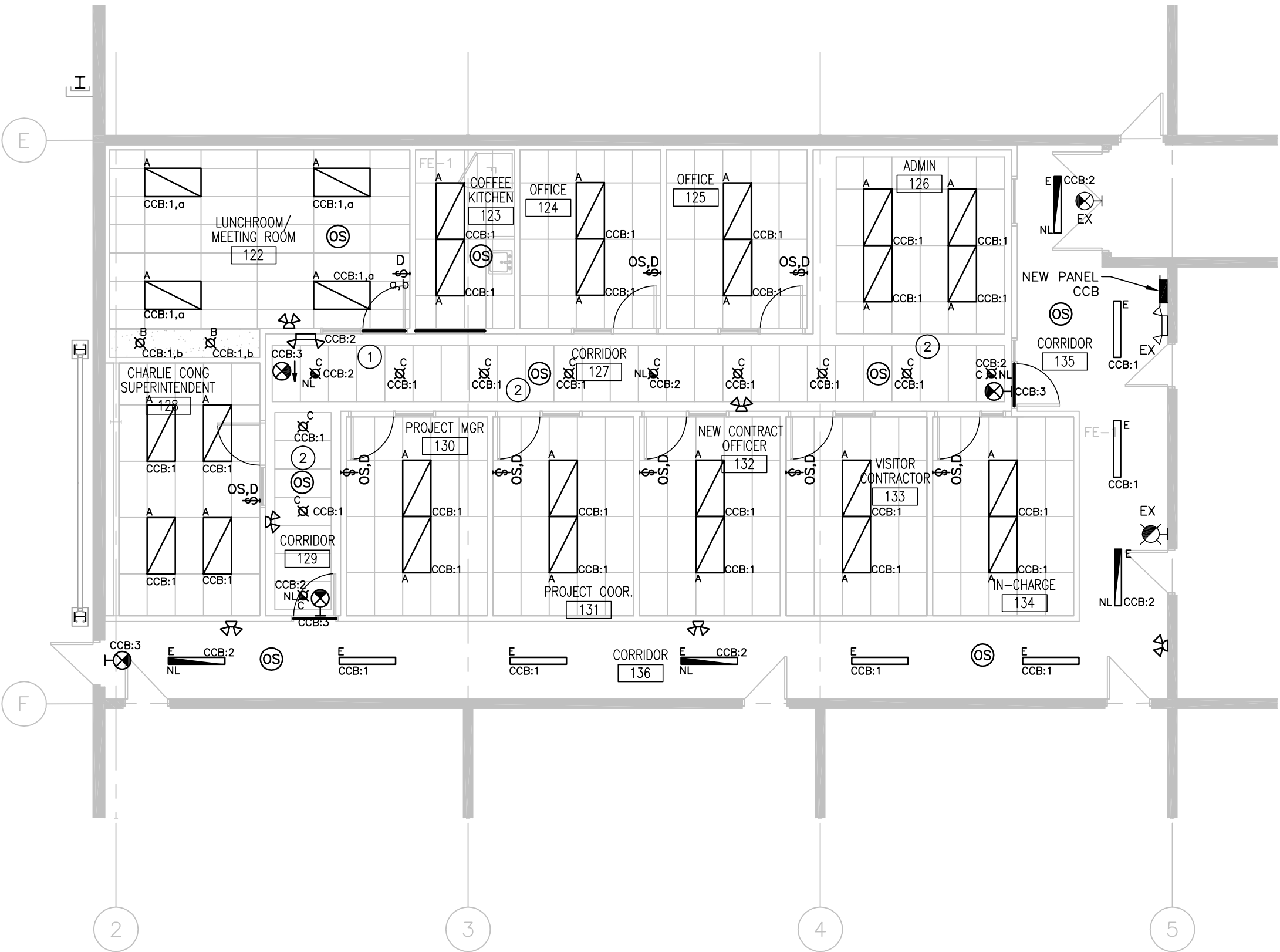
1

GENERAL NOTES:

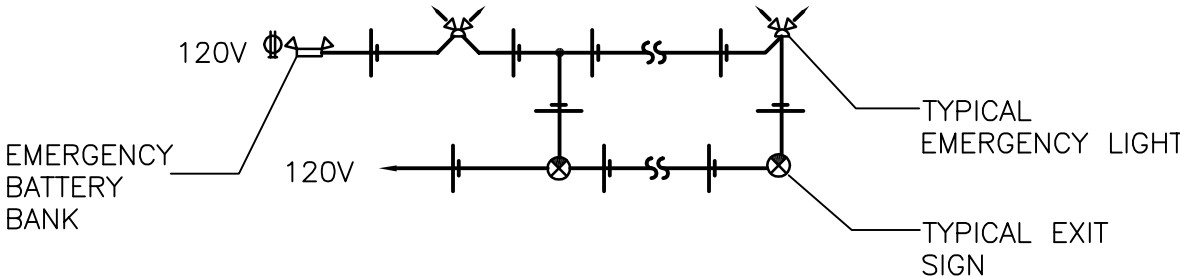
- ALL NEW EXIT SIGNS TO MATCH EXISTING GREEN RUNNING MAN EXIT SIGNS.
- ALL OFFICE LIGHTING SHALL BE CONTROLLED BY LINE VOLTAGE ON/OFF/DIMMER/OCCUPANCY SENSOR SWITCH. UPON ENTRY INTO ROOM, OCCUPANCY SENSOR WILL TURN ON THE LIGHTS AT THE DIMMING LEVEL THAT HAS BEEN MANUALLY SET. LIGHTS TO TURN OFF AFTER 30 MINUTES WITH NO MOTION. CONFIRM EXACT TIME OUT SETTINGS WITH OWNER.

KEY NOTES:

- WIRE ALL EMERGENCY REMOTE HEADS WITHIN OFFICE RENOVATION TO NEW BATTERY BANK.
- OCCUPANCY SENSORS SHALL CONTROL CORRIDOR LIGHTING AS WELL AS LIGHTING WITHIN ADMIN 126.



1 PARTIAL FLOOR PLAN – LIGHTING – NEW CONSTRUCTION
E-201 1/8" = 1'-0"



2 EMERGENCY LIGHTING & SIGNAGE RISER DIAGRAM
E-201 NTS

NOTES:

- CONDUCTORS SIZED TO MANUFACTURER'S RECOMMENDATIONS. MAXIMUM 5% VOLTAGE DROP.
- INTERLOCK 120V BATTERY FEED WITH GENERAL LIGHTING IN EACH AREA TO ACTIVATE EMERGENCY LIGHTING UPON LOSS OF GENERAL LIGHTING. PROVIDE RELAYS AS REQUIRED.
- MINIMUM CAPACITY AND VOLTAGE TO MATCH EXISTING.
- EMERGENCY LIGHTING TESTING TO BE CONDUCTED IN ACCORDANCE WITH THE CITY OF WINNIPEG INTEGRATED LIFE SAFETY SYSTEM TESTING.
- EXIT SIGNS TO BE SELF POWERED C/W 10 YEAR BATTERY LIFE.

- STANDARD OF ACCEPTANCE:
 - BATTERY UNIT: LUMACELL RC SERIES OR APPROVED EQUAL
 - REMOTE HEADS: LUMACEL MP-BLD SERIES OR APPROVED EQUAL
 - EXIT SIGN COMBO UNIT: LUMACELL LAC SERIES OR APPROVED EQUAL
 - EXIT SIGN: LUMACELL LA SERIES OR APPROVED EQUAL

1